

Printer Driver Instruction Manual

~For Windows XP~

DS-RX1

●Concerning Copyright

The copyrights for the DS-RX1 Printer Driver Instruction Manual, the DS-RX1 Printer Driver that is included with the printer, and the contents of the CD are the property of the Dai Nippon Printing Co.,Ltd.

Reproduction of any or all of the contents of the DS-RX1 Printer Driver Instruction Manual, the DS-RX1 Printer Driver that is included with the printer, and the contents of the CD without consent of the company is a violation of copyright law.

However, for non-commercial personal use purposes, you may make 1 copy of the Printer Driver Instruction Manual solely for back-up-purposes.

Microsoft and Windows are registered trademarks of Microsoft Corporation valid in the USA and other countries.

LEADTOOLS Copyright (C) 2007 LEAD Technologies, Inc.

The ICC profile is prepared by the technology of X-Rite.

●Notes for Safety Purposes

Please read the Instruction Manual well before using the printer, and follow all instructions carefully.

Further, the contents of the safety warnings and comments in the Instruction Manual concerning use met safety standards at the time of publishing.

●Concerning modification

The DS-RX1 printer and the DS-RX1 Printer Driver and CD contents were planned, developed, and manufactured by Dai Nippon Printing Co.,Ltd.

For safety purposes, any modification is prohibited.

Contents

Chapter 1 Install	1
1.1 Printer and Host computer Connection	1
1.2 Found New Hardware Wizard	1
1.3 Install from Add Printer Wizard	5
Chapter 2 Properties	11
2.1 Opening Printer Properties	11
2.2 Explanation of Print Setting Functions	12
2.2.1 Layout	12
2.2.2 Advanced Options	13
2.2.3 Paper/Quality	17
2.2.4 Option	17
2.2.5 Color Adjustment	18
2.3 Default Values for Various Settings	19
2.4 Color Management	19
2.5 Print Area	20
2.6 Print Drection	20
Chapter 3 Updating the Driver	21
Chapter 4 Driver Removal	23

Chapter 1 Install

1.1 Printer and Host computer Connection

Power ON the DS-RX1 and connect the DS-RX1 printer and the host by USB cable.

* Please refer to the manual for the DS-RX1 printer for connection if needed.

After that, if [Found New Hardware Wizard] is initiated, please install using the procedure in [1.2 Found New Hardware Wizard]. If [Found New Hardware Wizard] is not initiated, please install in accordance with [1.3 Install from Add Printer Wizard].

1.2 Found New Hardware Wizard

After confirming [Install from a list or specific location [Advanced]] is selected, click [Next].

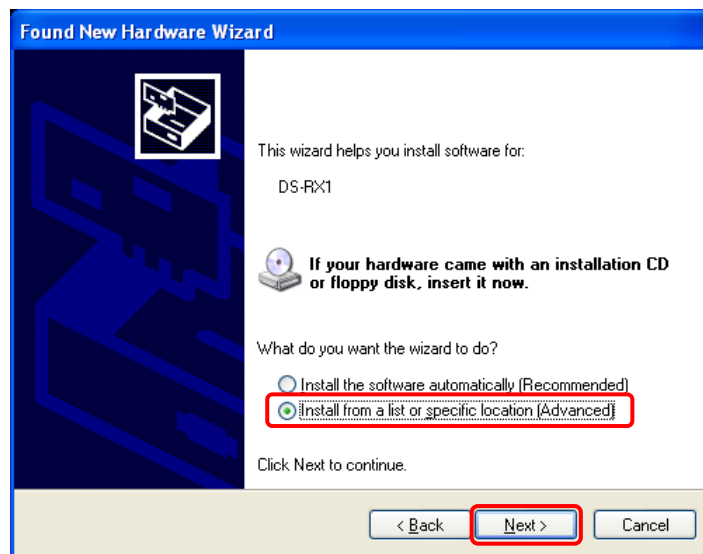


Fig 1.1 Found New Hardware Wizard

Note) When using Windows XP SP2 or later, if the following screen appears in “Found New Hardware Wizard”, select “No, not this time”, and click the “Next” button.



Select [Search for the best driver in these locations], and confirm that [Include this location in the search] is selected. Specify the location of the installation disk using the [Browse] button, and click [Next].

* The location is different by the OS.

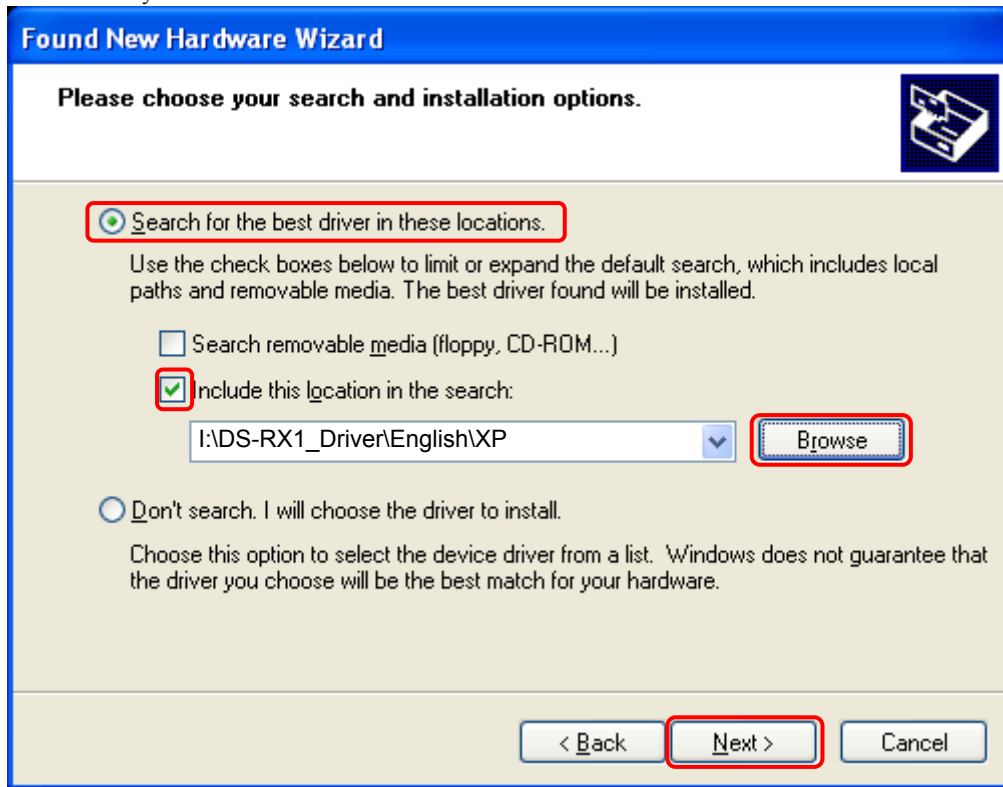


Fig 1.2 Search and Install Option

After searching the driver file, software installation is initiated. It takes some time for the software installation.

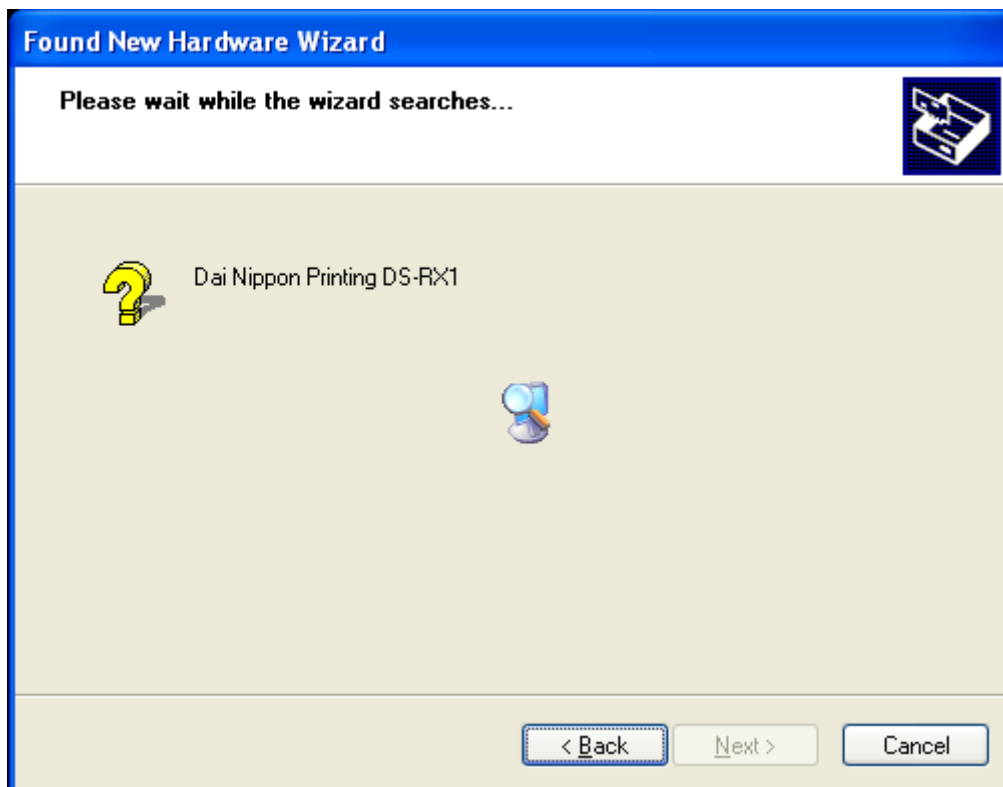


Fig 1.3 Software Installation

If the following window appears during upgrade installation, check the “Version” section, select the newest version, and click the “Next” button.

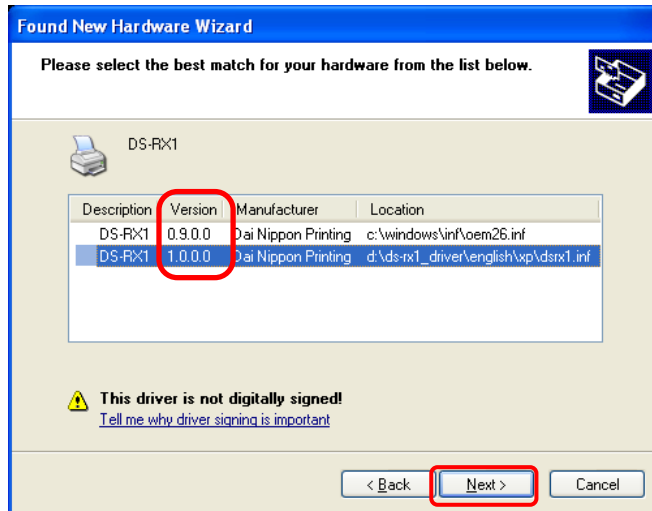


Fig 1.4 Select Software

During software installation, the following message will be displayed. Please click [Continue Anyway] to continue.



Fig 1.5 Hardware Installation

If [Search removable media (floppy,CD-ROM)] has been selected in Figure 1.2, the following message will be displayed. CD-ROM is inserted, and click [OK].

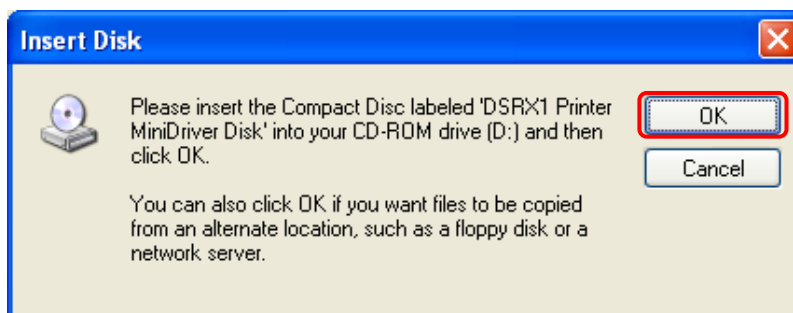


Fig 1.6 Insert Disk

If the following window appears when clicked [OK] in Figure 1.6.
Specify the location of the installation disk using the [Browse] button, and click [OK].

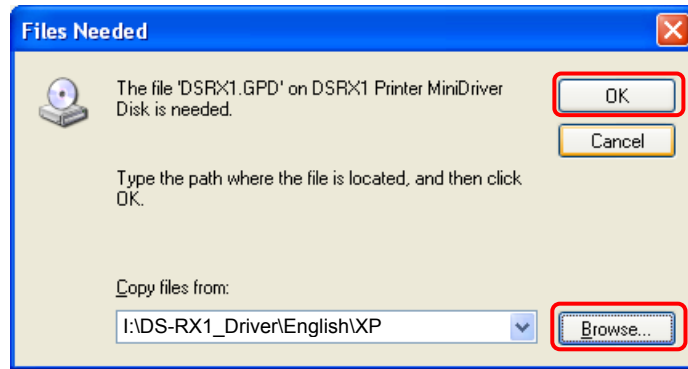


Fig 1.7 Files Needed

Click [Finish] to finish the wizard.

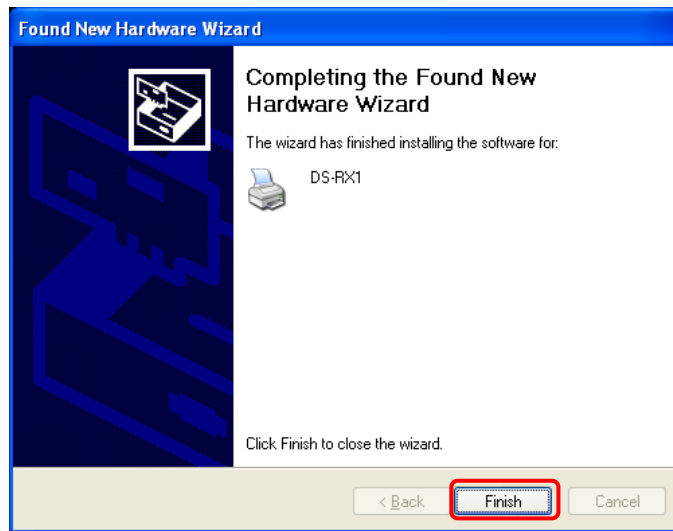


Fig 1.8 Quit from Found New Hardware Wizard

Click [start] – [Printer and Faxes] and confirm that [DS-RX1] is shown.

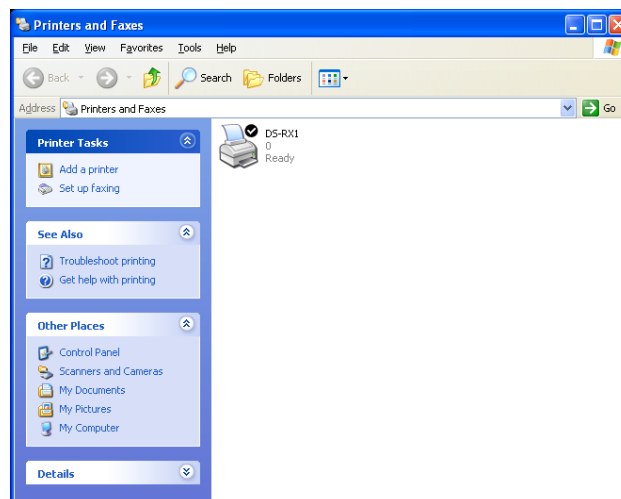


Fig 1.9 Printers and Faxes

After installation of the printer-driver is complete, be sure to reboot the computer.

1.3 Install from Add Printer Wizard

Click [start] – [Printers and Faxes].

(Depending on the host computer, [Printers and Faxes] may not be indicated. In that case, click [start] – [Control Panel] – [Printer and Other Hardware] – [Printers and Faxes])

Click [Add a printer].

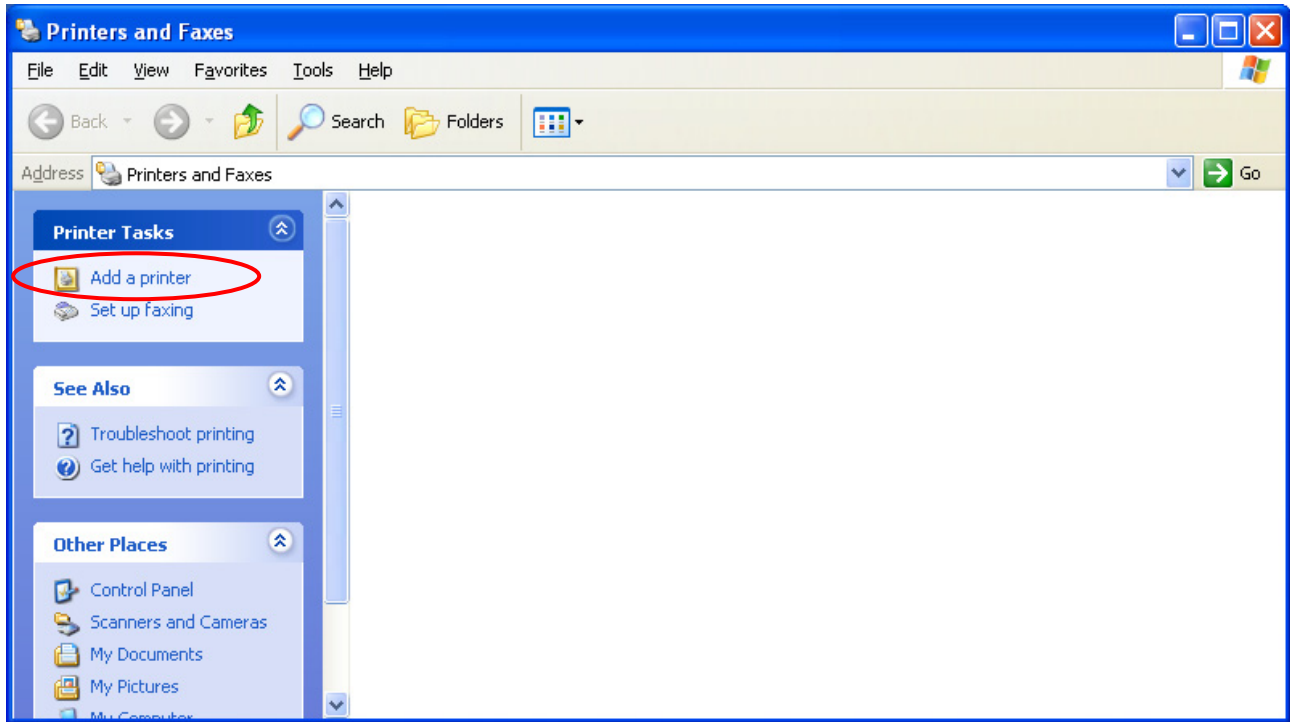


Fig 1.10 Printers and Faxes

After [Add Printer Wizard] window is shown, click [Next].



Fig 1.11 Start of Add Printer Wizard

In the [Local or Network Printer] window, select [Local printer], and deselect [Automatically detect and install my Plug and Play printer], then click [Next].

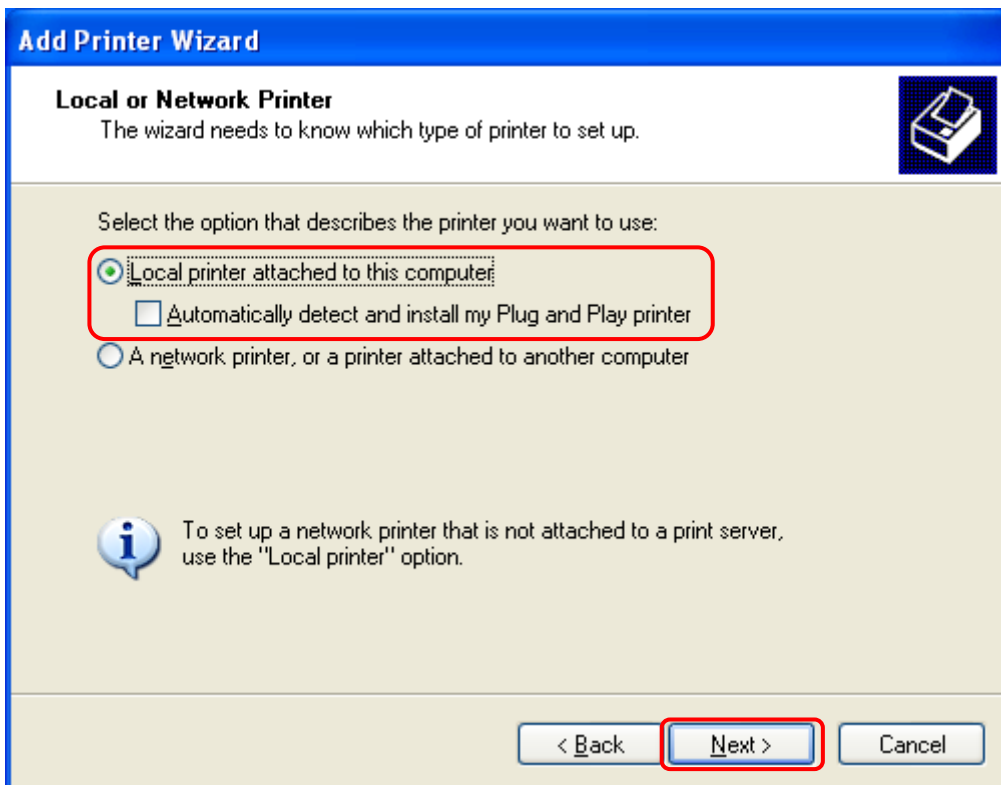


Fig 1.12 Local or Network Printer

In the [Select a Printer Port] window, select [Use the following port] and assign USB port ([USB001] so on) from the dropdown list, then click [Next].

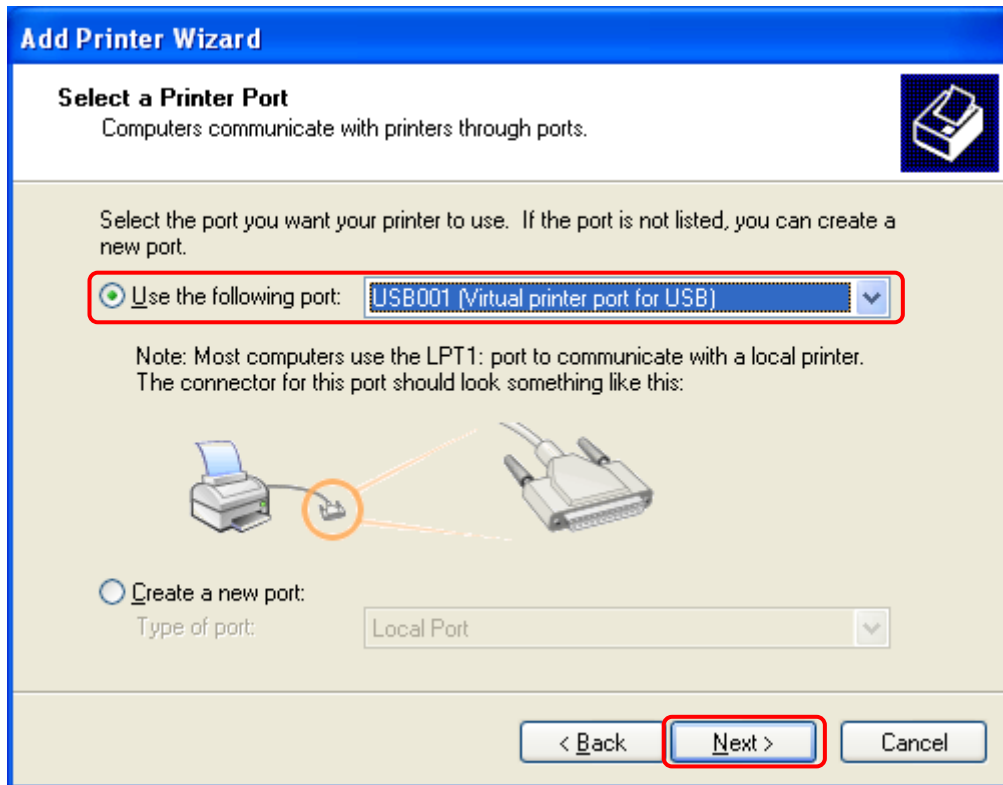


Fig 1.13 Printer port assign

After [Install Printer Software] is shown, click [Have Disk].

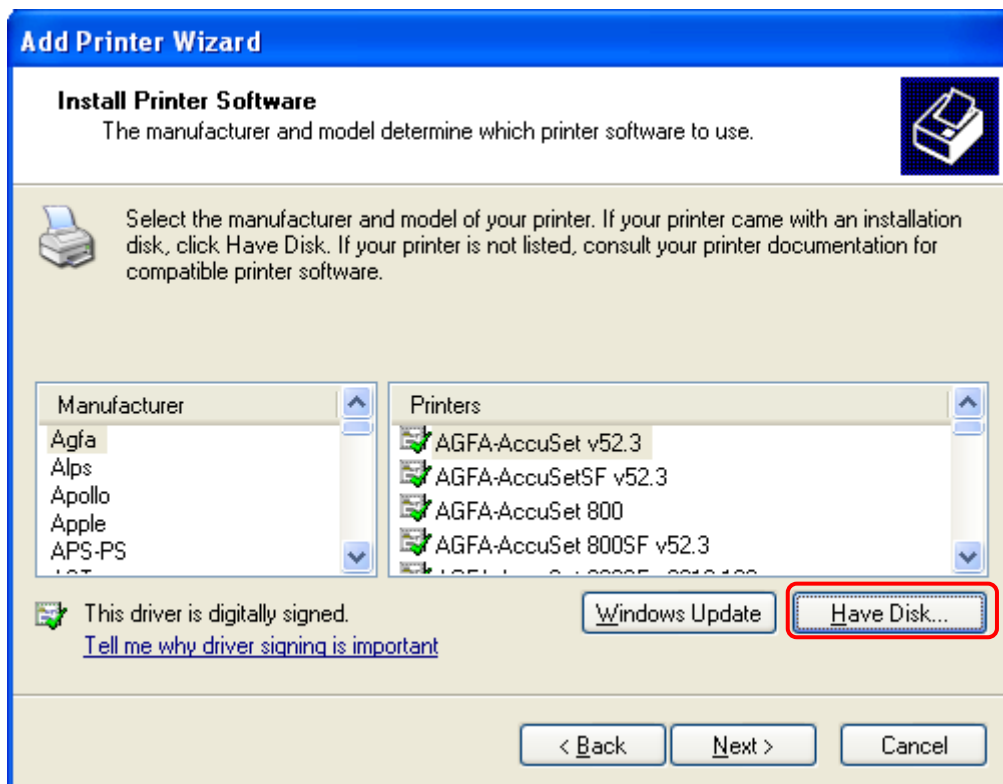


Fig 1.14 Printer software installation

In the [Install From Disk] window, select the location of the installation disk using [Browse].

* The location is different by the OS.

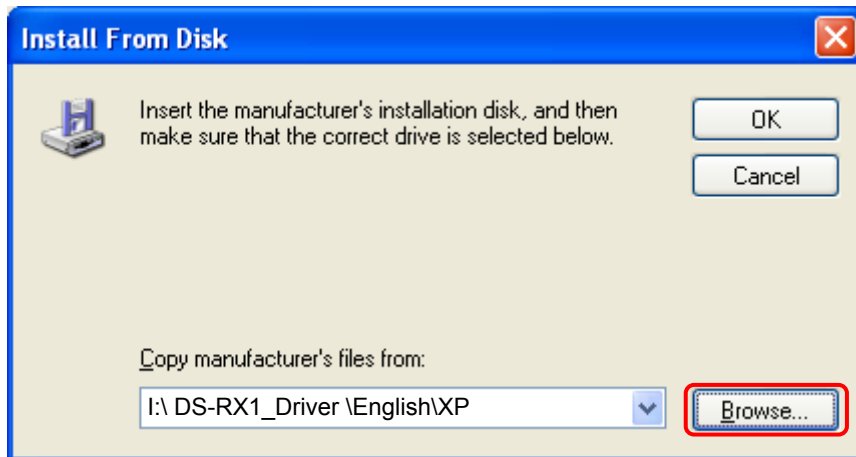


Fig 1.15 Install from disk

After confirming that [DS-RX1] is shown, click [Next].

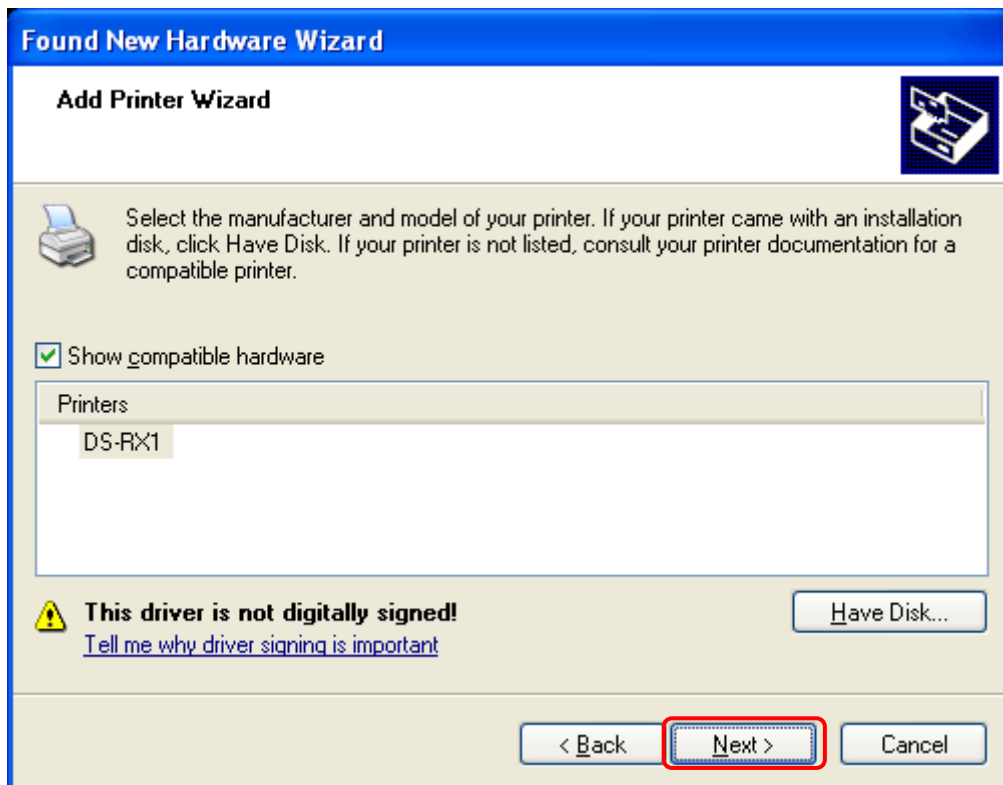


Fig 1.16 Printer software installation

In the [Name Your Printer] window, assign a name to the printer and click [Next].

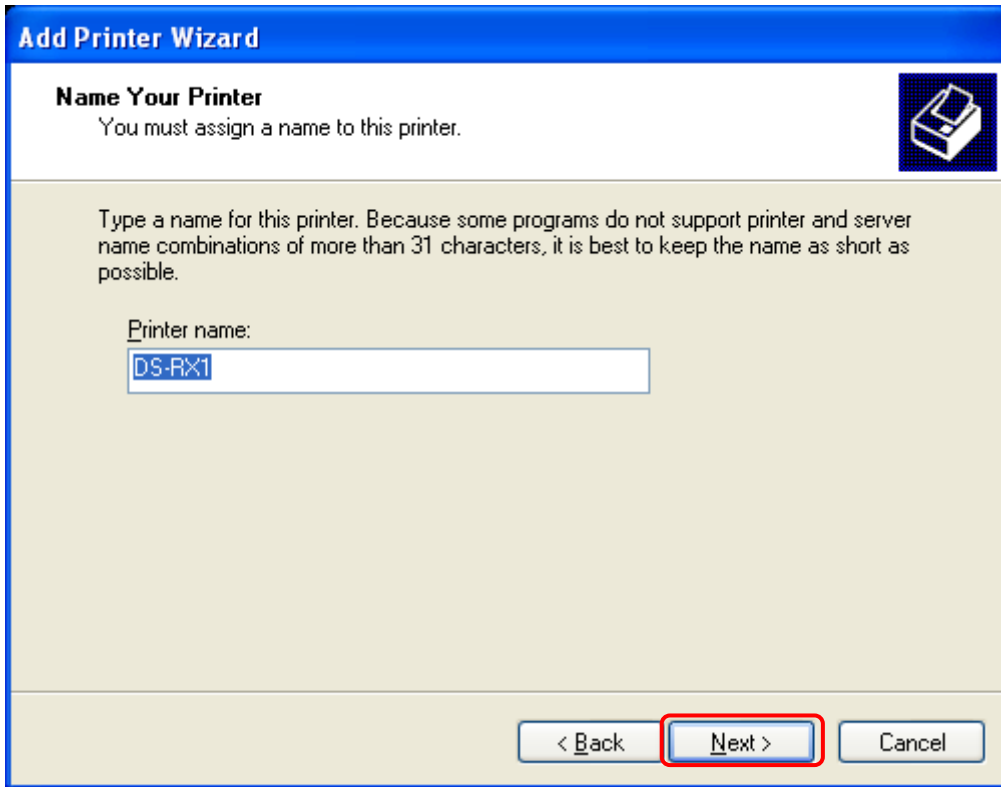


Fig 1.17 Assigning a name to the printer

In the [Print Test Page] window, select [No] and click [Next].

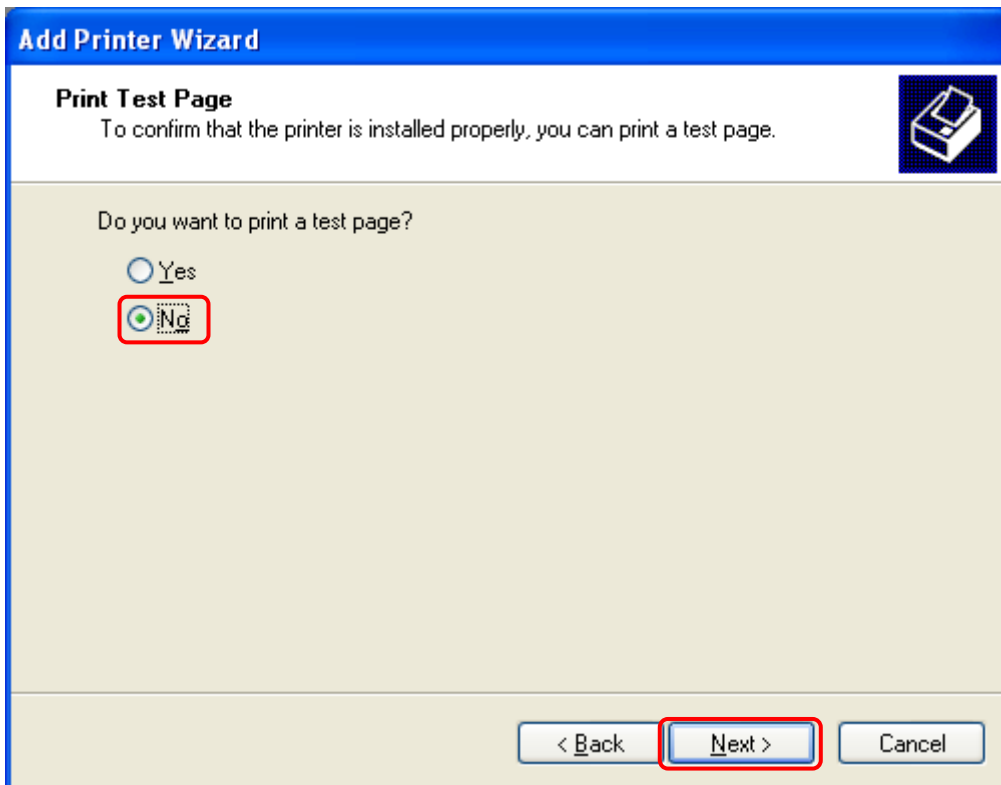


Fig 1.18 Print test page

In the [Completing the Add Printer Wizard] window, click [Finish].

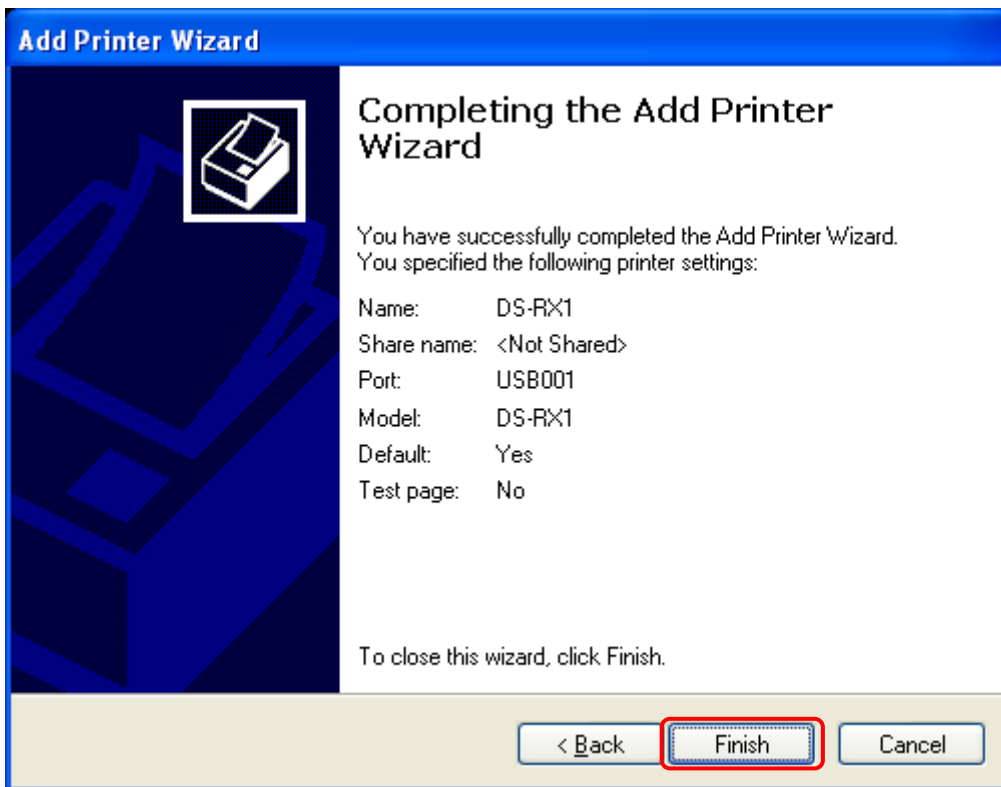


Fig 1.19 Completing the Add Printer Wizard

When installing the software, the following message may be displayed. Click [Continue Anyway] to continue.



Fig 1.20 Hardware installation

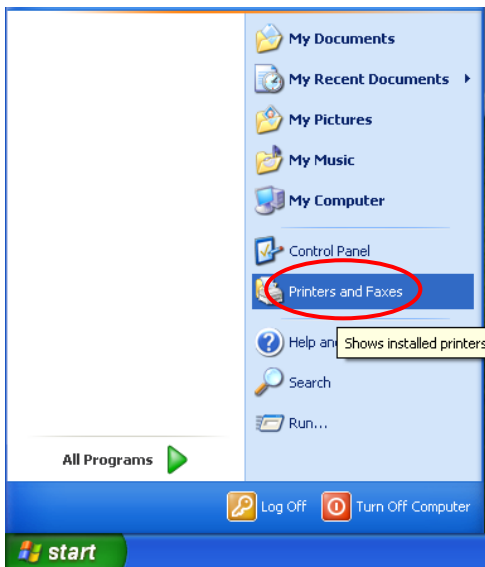
After installation of the printer-driver is complete, be sure to reboot the computer.

Chapter 2 Properties

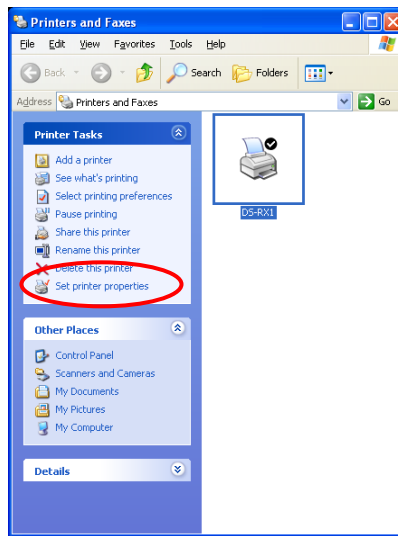
Various printer settings can be made using the DS-RX1 Driver properties. As a rule, the printer settings should not be altered. Use the default settings present at installation. Alter paper-size settings at the Application side. Before operation, be sure to have a good understanding of the contents.

2.1 Opening Printer Properties

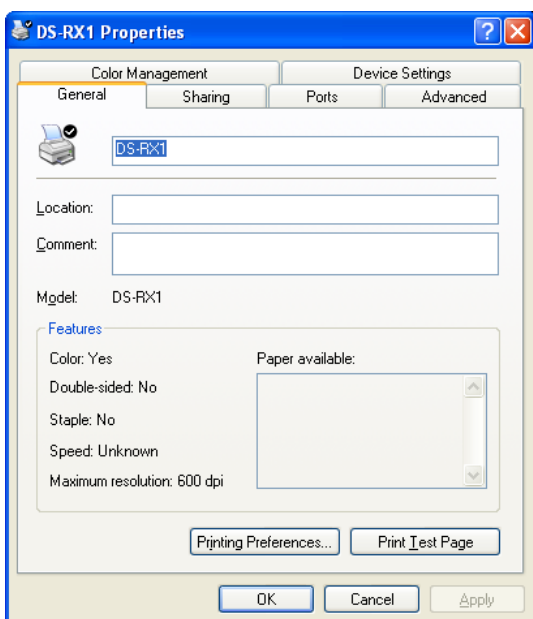
1. Start in order using START →
All Programs → Printers and Faxes



2. Select the DS-RX1 printer →
Open Set printer properties



3. The DS-RX1 Properties window will appear.



2.2 Explanation of Print Setting Functions

2.1 From the Properties window, by selecting Printing Preferences you can make various print settings.

2.2.1 Layout

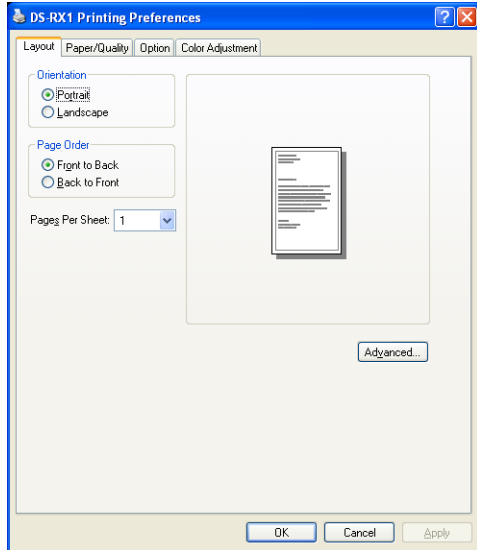


Fig 2.2.1 Layout tab

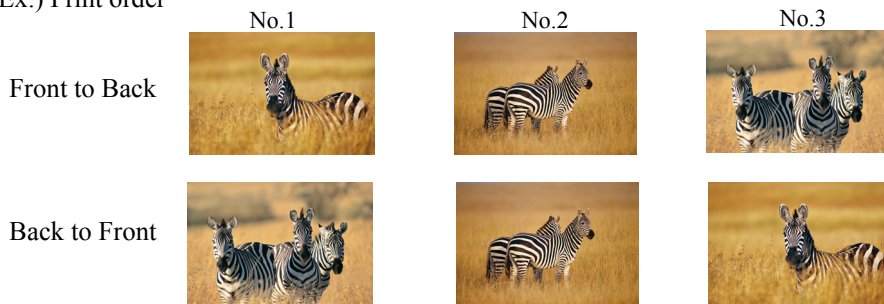
Orientation

Assign print orientation as Landscape or Portrait.
Refer to [2.6 Print direction](#).

Page Order

When printing multiple images in the application, you can set the order.

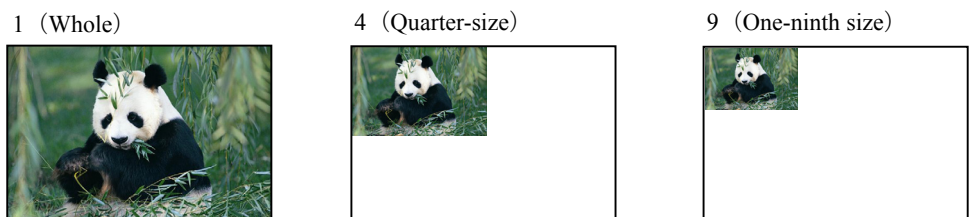
Ex.) Print order



Pages Per Sheet

Prints the designated fractional size.

Ex.) Fractional size



2.2.2 Advanced Options

By selecting [Advanced] in the Layout window, various settings can be made using Advanced Options.

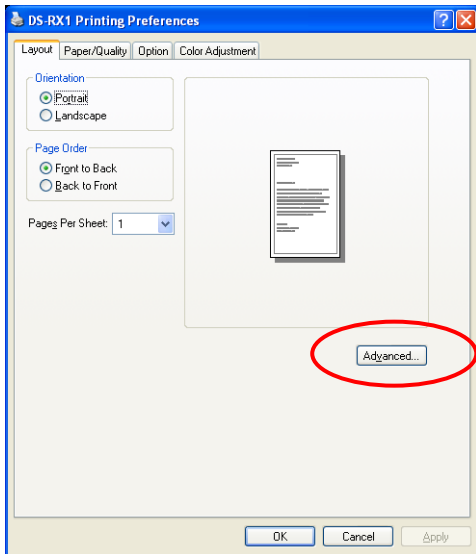


Fig 2.2.2.1 Advanced Settings

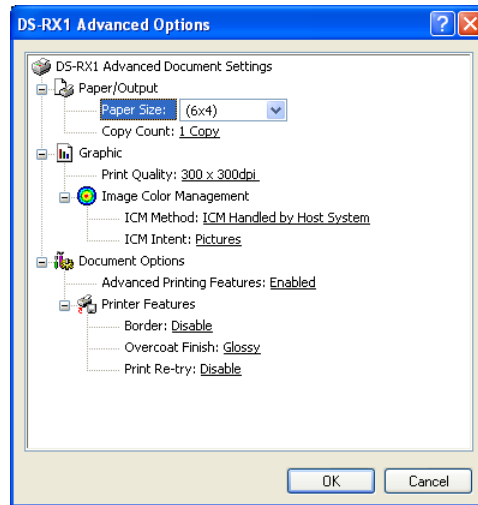


Fig 2.2.2.2 Advanced Options tab

Paper Size

You can designate the paper size. Please match the paper size to the media size with which the printer is equipped

Copy Count

You can designate the number of times an image will be printed.

Print Quality

You can designate the print quality. Please match the print quality to the printer settings.

ICM Method

ICM intent	Function
ICM Disabled	2.2.4 Synchronous with “Color Management: None” in paper option.
ICM Handled by Host System	2.2.4 Synchronous with “Color Management: ICM” in paper option. Performs color management with the driver.
ICM Handled by Printer	This is the same as setting “ICM Handled by Host System”.

ICM Intent

This designates the rendering method when using ICM. Always have the ICC profile for the DS-RX1 set to “Picture”. Please do not use it at other settings.

Advanced Printing Features

Always have it set to “Enabled”. Please do not use it at other settings.

Border

Synchronous with the border option in the paper option.

Overcoat Finish

The overcoat finish for the printed surface can be selected from the following two types.

Overcoat Finish	Function
Glossy	This finishes the print with a glossy surface.
Matte	This finishes the print with a matte (non-glossy) surface.

Print Re-try

This sets up whether print data in a printer buffer when the error of a printer occurs is printed after error recovery, or it does not print.

Print Re-try	Function
Disable	Printing data in a printer buffer is cleared in the case of a printer error. After an error recovery, the cleared image data must be re-sent. When using an application that has an error recovery function, select this option.
Enable	Printing data in a printer buffer is held in the case of a printer error. After an error recovery, the print process resumes with the saved data. However, if the power is turned OFF, the data will not be saved.

According to the contents of a printer error, the power supply of a printer needs to be re-switched on for error recovery. In this case, it is not dependent on a setup of Print Re-try, and printing data in a printer buffer is cleared.

Operation by Print Re-try setup in each error is shown below.

Contents of an error	Print Re-try setup is "Disable"	Print Re-try setup is "Enable"	
Paper End	Please resend picture data not printed after error recovery.	Printing processing is resumed from data currently held in a printer buffer after error recovery. When paper initialization operation is performed, it is printed after paper initialization operation.	
Ribbon End			
Cover Open			
Paper Jam (*1)			
Ribbon Error (*1)			
Paper Definition Error			
Data Error	For error recovery, the power supply of a printer once needs to be turned OFF. Therefore, print data in a printer buffer is cleared by power-supply OFF of a printer regardless of a setup of the Print Re-try function.	For error recovery, the power supply of a printer once needs to be turned OFF. Therefore, print data in a printer buffer is cleared by printer power-supply OFF even if the Print Re-try function is set to "Enable".	
Head Position Error			
Power Supply Fan Stop			
Cutter Error			
Head Voltage Error			
Abnormal Head Temp.			
Abnormal Media Temp.			
Ribbon Tension Error			Please resend picture data not printed after printer re-starting.
RFID Module Error			
System Error			

*1: After an error stop, a paper or a ribbon should perform removal work of an error factor according to a printer user's manual.

<Multiple layout>

When the DS-RX1 is using 6x8 size media, 2 image layout is possible. With the printer driver paper setting, multi-image layout is made possible, and the image sizes are as follows.

Layout designation

Driver paper setting (layout)	Paper Orientation	Image size width x height (mm)	Using media
(6x4) x 2	Portrait	(156.1x105.0) x 2	6x8
	Landscape	(105.0x156.1) x 2	
PR (4x6) x 2	Portrait	(105.0x156.1) x 2	6x8
	Landscape	(156.1x105.0) x 2	
Image layout median size		2.54	

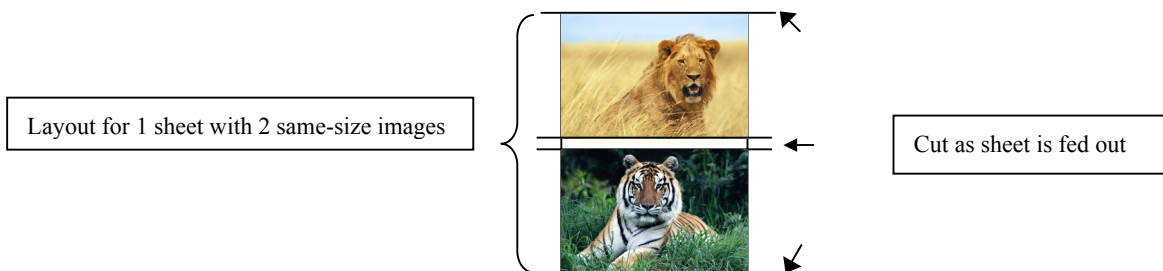
Multiple layout is possible under the following conditions.

1. The printer is using 6x8 size media.
2. The printer driver paper size is set to one of the above sizes.
3. Multiple images are sent from the application.

Note) Because the multi-image layout occurs on a per job basis, this works when there are multiple images for 1 job. If you want to print the same image, be sure to send the image data for each copy to be printed. The printer prints 2 images in one operation, and the paper is cut as it is fed out.

<Multi-image layout patterns>

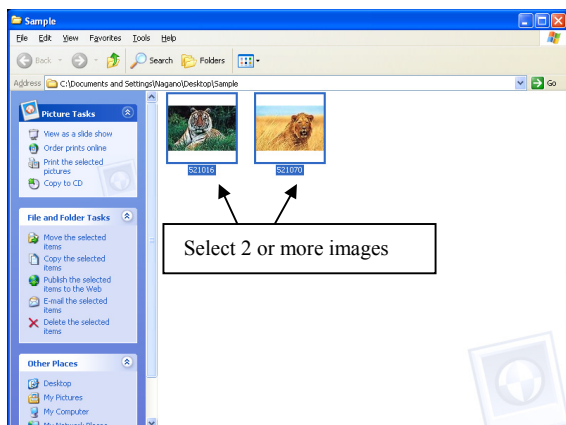
The following is possible for the multi-image layout pattern.



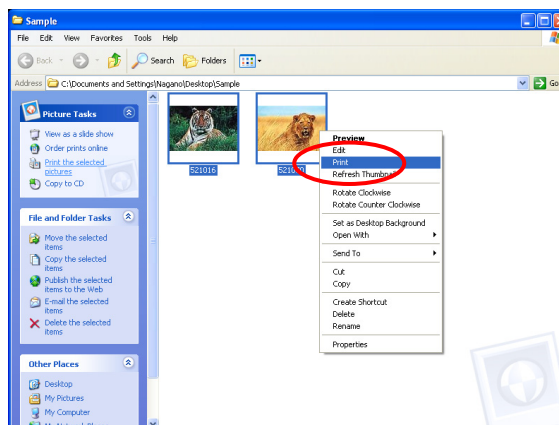
<Example of Application Use>

This is an example using Windows Explorer

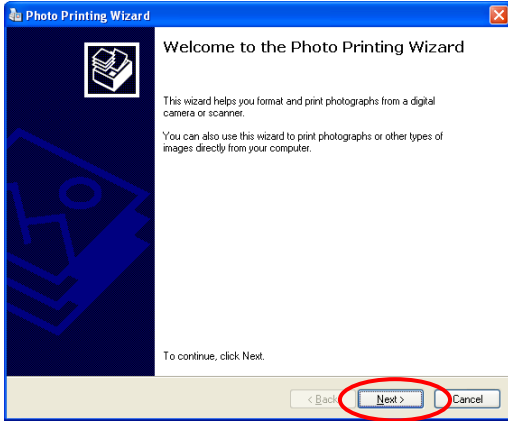
Step 1. Select 2 or more images.



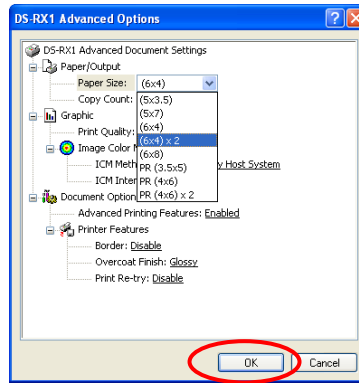
Step 2 Right-Click on the image, and from the pull-down menu select Print



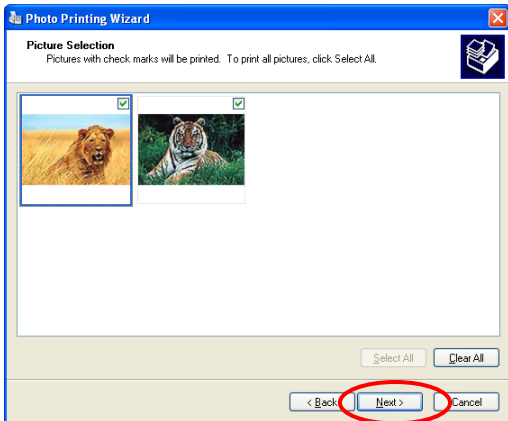
Step 3 Click on “Next”.



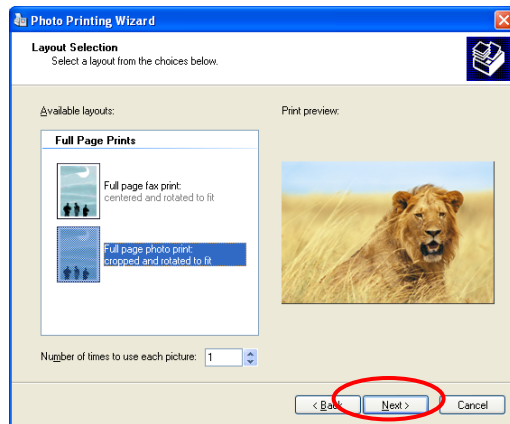
Step 7 Set the Paper Size to “(6x4)x2”. Then click “OK” on the windows from steps 7⇒6, returning to the window displayed in Step 5.



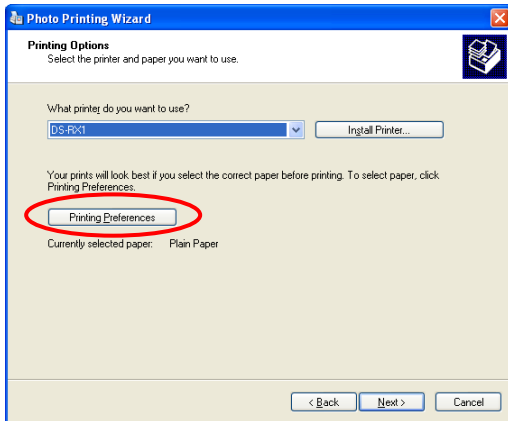
Step 4 Click on “Next”.



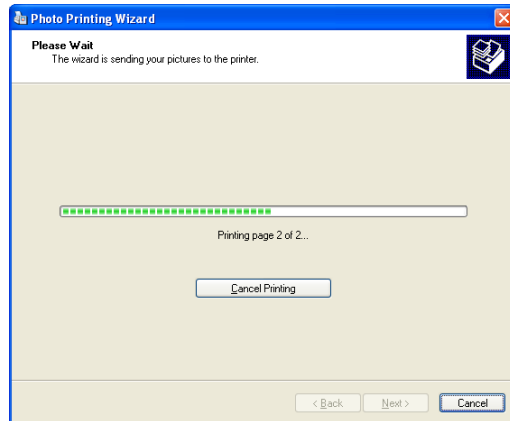
Step 8 Click on “Next”.



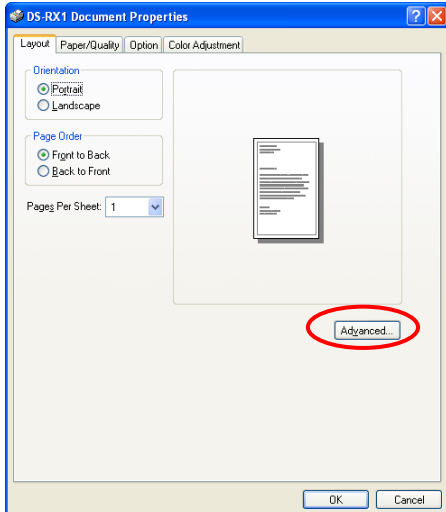
Step 5 Click on “Printing Preference”.



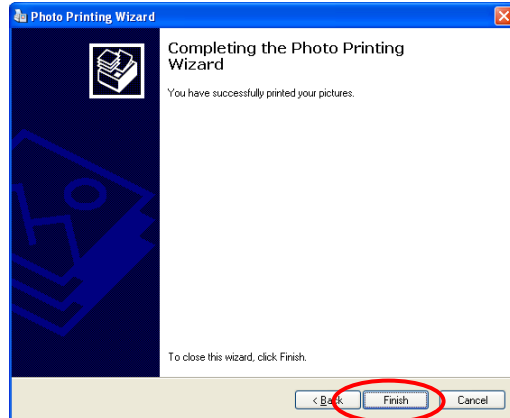
Step 9



Step 6 Click on “Advanced”.



Step 10 Click on “Finish”.



2.2.3 Paper/Quality

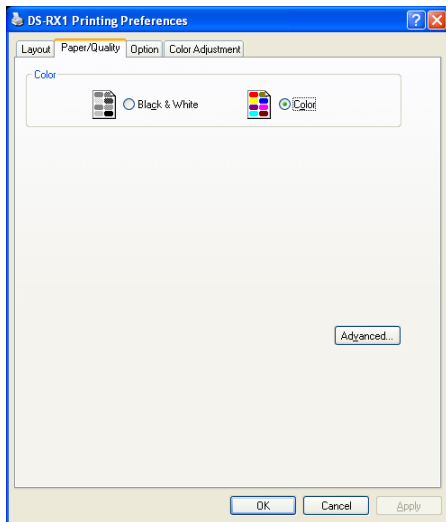


Fig 2.2.3 Paper/Quality tab

Color Please set to color print. Do not use for black and white printing.

2.2.4 Option

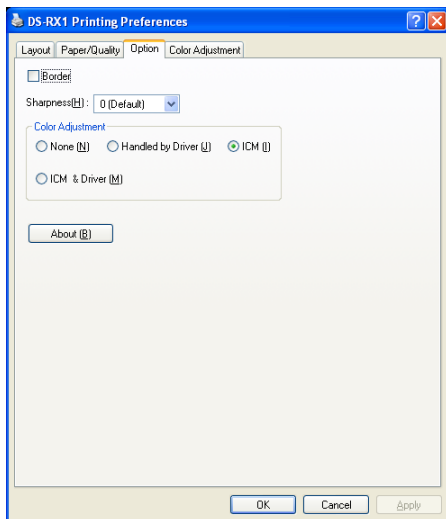


Fig 2.2.4.1 Paper option tab

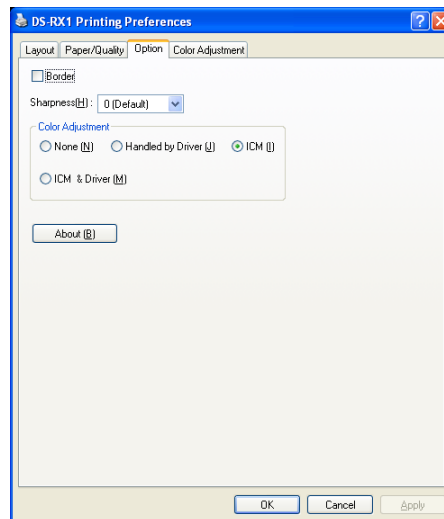


Fig 2.2.4.2 Sharpness setting

Border

Designates yes or no for border (check means with border). Synchronous with Border in the Advanced Settings.

Sharpness

Processes for 11 sharpness levels (Fig 2.2.4.2). 0(Initial setting) means there is no sharpness processing. Minus(-) blurs the image, and plus(+) increases the sharpness.

Color Adjustment

None

Synchronous with the ICM Method in the Advanced Settings. Checking this item disables ICM and the Color Adjustment tab, and color management does not occur from the driver.

Handled by Driver

Checking this item disables ICM and [2.2.5 Color Adjustment](#) is enabled. The adjustment values for gamma, brightness, contrast, and chroma are shown.

ICM

Synchronous with the ICM Method in the Advanced Settings (ICM Handled by Host System). Checking this item enables color management from the driver.

ICM & Driver

If you check this, ICM (color management) and color adjustment will be enabled.

About

Displays the driver version.

2.2.5 Color Adjustment

If you check **Handled by Driver** in [2.2.4 Option](#), the respective color adjustment values in the Color Adjustment tab are reflected in the image.

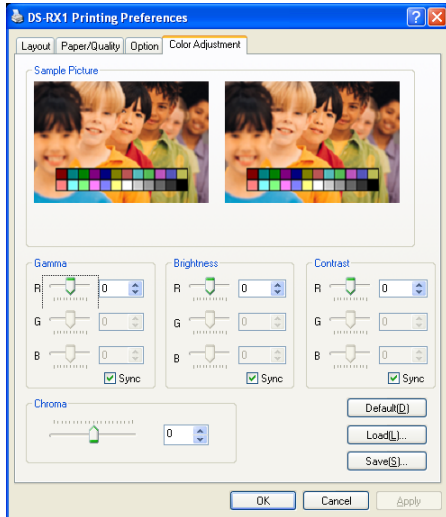


Fig 2.2.5 Color Adjustment tab

Setting ranges in the Color Adjustment tab are as follows:

Adjustment Item	Adjustment Value
Gamma	-100(dark) ~ 100(light) (0 means no adjustment, Gamma 2.0 ~ 0.5) Adjusts the density of the highlights in the image. The greater the gamma value, the brighter the highlights. Synchronous check box ON : Sets RGB at the same value OFF: Sets RGB at a different value
Brightness	-100(dark) ~ 100(light) (0 means no adjustment) Adjusts the brightness of the image. The larger the value, the greater the overall brightness of the image. Synchronous check box ON : Sets RGB at the same value OFF: Sets RGB at a different value
Contrast	-100(weak) ~ 100(strong) (0 means no adjustment) Adjusts the contrast of the image. The larger the value, the greater the contrast. Synchronous check box ON : Sets RGB at the same value OFF: Sets RGB at a different value
Chroma	-100(weak) ~ 100(strong) (0 means no adjustment) Adjusts the color saturation of the image.

2.3 Default Values for Various Settings

Default values for each option (at the time of installation) are shown below. If the printer driver does not work correctly after changing the options, please return the options to the default settings.

Note) According to the Service Pack and use environment of OS, the default value at the time of installation may differ from the following chart.

Tab	Options		Default	
Layout	Orientation		Portrait	
	Page Order		Front to Back	
	Pages Per Sheet		1	
Paper/Quality	Color		Color	
Option	Frame		Disable	
	Sharpness		0 (Default)	
	Color Adjustment		ICM	
Color Adjustment	Gamma		0	
	Brightness		0	
	Contrast		0	
	Chroma		0	
Advanced <small>(Click [Advanced] button of Layout tab)</small>	Paper/Output	Paper Size	(6 x 4)	
		Copy Count	1	
	Graphic	Print Quality	300 x 300dpi	
		Image Color Management	ICM Method	ICM Handled by Host System
			ICM Intent	Pictures
	Document Option	Advanced Printing Features		Enable
		Printer Features	Border	Disable
			Overcoat Finish	Glossy
			Print Re-try	Disable

Chart 2.3 Print Setting Default Values

2.4 Color Management

In [Color Management], this designates the color profile. Default at installation associates [RX1].

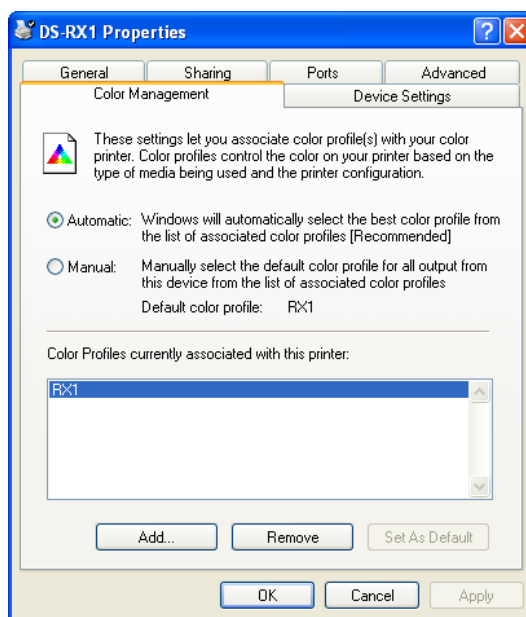


Fig 2.4 Color Management

2.5 Print Area

Depending on the paper size designated at the driver, the image size and pixel count will be as follows.

Paper	Paper Orientation	Image size (width x height)		Image pixel amount (width x height)		
		(inch)	(mm)	300 x 300 DPI	300 x 600 DPI	600x600 DPI
(5x3.5)	Portrait	5"x 3.5"	131.1 x 92.1	1548 x 1088	1548 x 2176	3096 x 2176
	Landscape	3.5"x 5"	92.1 x 131.1	1088 x 1548	2176 x 1548	2176 x 3096
(6x4)	Portrait	6"x 4"	156.1 x 105.0	1844 x 1240	1844 x 2480	3688 x 2480
	Landscape	4"x 6"	105.0 x 156.1	1240 x 1844	2480 x 1844	2480 x 3688
(5x7)	Portrait	5"x 7"	131.1 x 181.0	1548 x 2138	1548 x 4276	3096 x 4276
	Landscape	7"x 5"	181.0 x 131.1	2138 x 1548	4276 x 1548	4276 x 3096
(6x8)	Portrait	6"x 8"	156.1 x 206.2	1844 x 2436	1844 x 4872	3688 x 4872
	Landscape	8"x 6"	206.2 x 156.1	2436 x 1844	4872 x 1844	4872 x 3688
PR (3.5x5)	Portrait	3.5"x 5"	92.1 x 131.1	1088 x 1548	2176 x 1548	2176 x 3096
	Landscape	5"x 3.5"	131.1 x 92.1	1548 x 1088	1548 x 2176	3096 x 2176
PR (4x6)	Portrait	4"x 6"	105.0 x 156.1	1240 x 1844	2480 x 1844	2480 x 3688
	Landscape	6"x 4"	156.1 x 105.0	1844 x 1240	1844 x 2480	3688 x 2480

2.6 Print Drection

Regarding the print direction setting, the relationship between the application-generated image and the print (feed direction) is as shown in the following chart. The generated image is the image generated through enlargement/reduction to fit the size shown in 2.5 Print Area, without having the application rotate the original image.

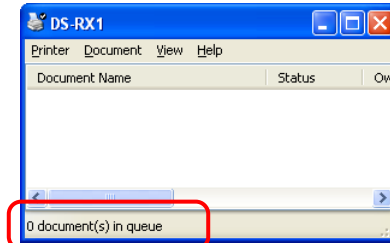
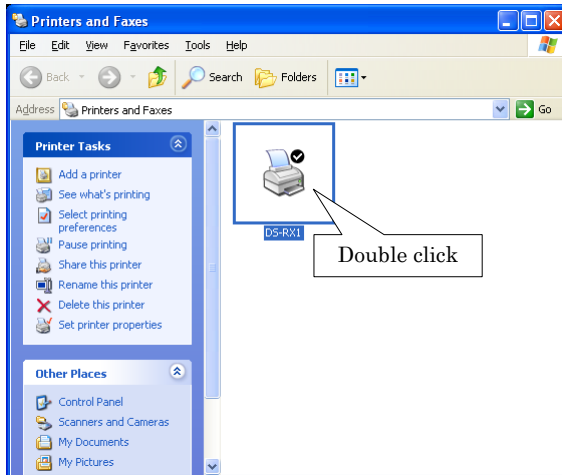
Original Image	Driver setting						
	Orientation setting	Paper setting					
		(5x3.5) (6x4) (6x4)x2		PR (3.5x5) PR (4x6) PR (4x6)x2		(5x7) (6x8)	
Generation image	Output image (direction ↓)	Generation image	Output image (direction ↓)	Generation image	Output image (direction ↓)		
	Portrait						
	Landscape						
	Portrait						
	Landscape						

Chapter 3 Updating the Driver

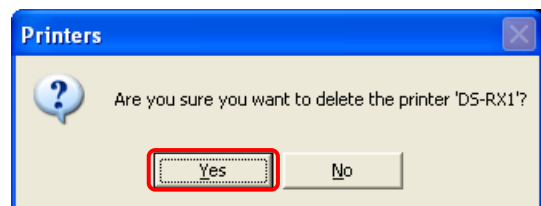
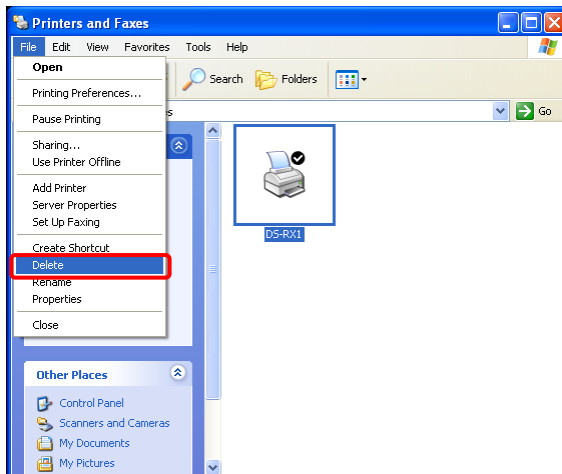
In order to update the printer-driver, follow the steps shown below.

1. Driver Removal

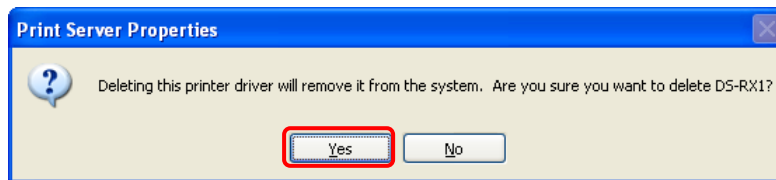
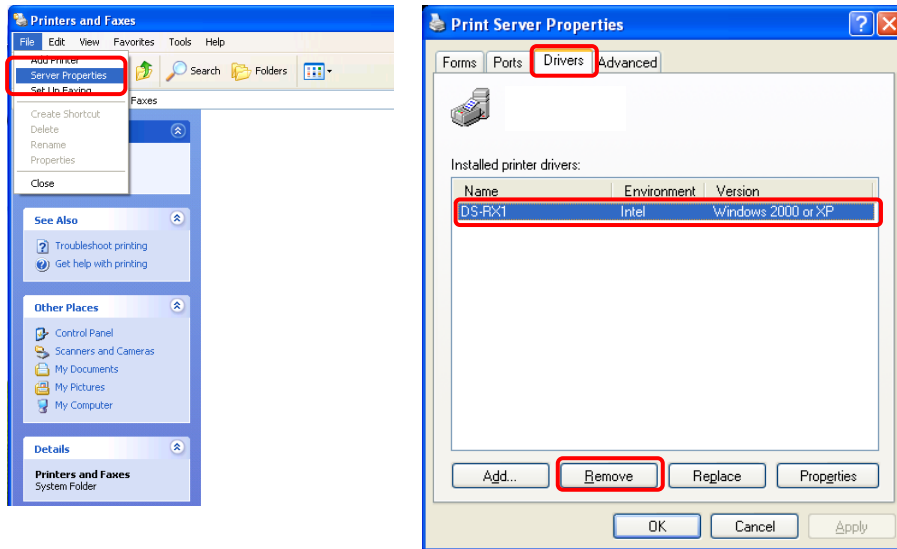
- (1) Before removing the printer-driver, shut down all other applications. Also, double click the icon for the printer to be removed, and make sure there are no documents in the queue before you begin removal of the driver.



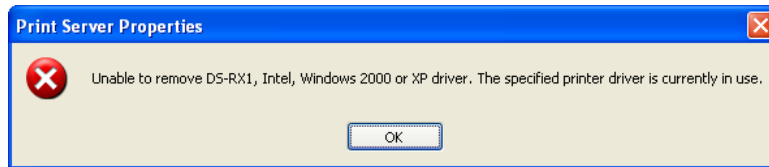
- (2) From the [Printers and Faxes] window, select the DS-RX1 printer. Select [Delete this printer]. Are you sure you want to delete the printer "DS-RX1"? → select "Yes" to remove the printer.



- (3) After the DS-RX1 printer has been removed, in the same way select File → Server Properties
 The Print Server Properties dialog box should appear. Select the Drivers tab. After selecting driver “DS-RX1”, click “Remove”. The confirmation box will appear. By clicking “Yes”, the driver will be removed. After removal, reboot the computer.

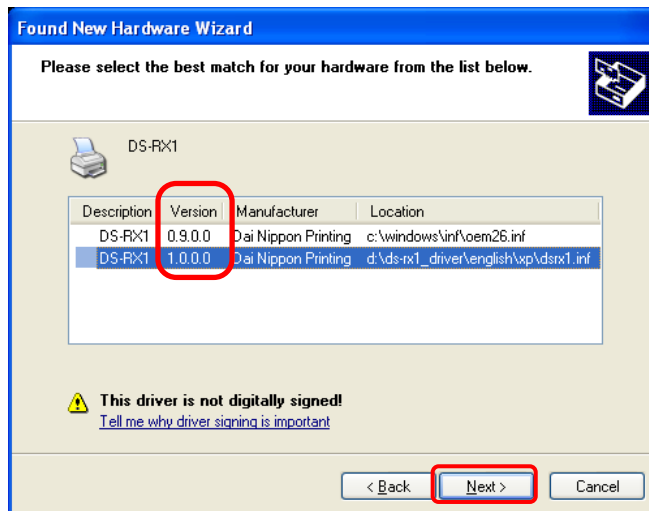


Note) Before removing the printer-driver, if the following error message appears, please reboot the computer. After the computer has been rebooted, repeat the steps to remove the printer-driver.



2. Installing the printer-driver upgrade

After removing the printer and printer-driver, install the new printer-driver. For installation steps, please refer to Chapter 1 “Install”. If the following window appears during installation, check the “Version” section, select the newest version, and click the “Next” button.



3. Rebooting the computer

After installation of the printer-driver is complete, be sure to reboot the computer.
 (Do not print immediately after installation. First reboot the computer.)

Chapter 4 Driver Removal

For steps to remove the printer-driver, refer to Chapter3 “1.Driver Removal”.